

# Bewitched

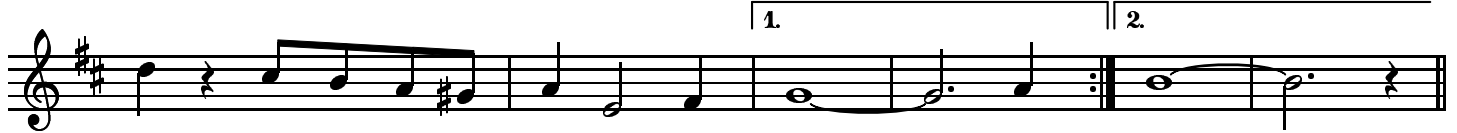
ROGERS & HART

D D<sup>♯</sup> E<sup>-</sup> A<sub>7</sub> D D<sup>7♯5</sup> G $\Delta$  A<sub>7</sub><sup>♭9</sup>



I'm wild a-gain be - guiled a-gain a sim-per-ing whim-per-ing child a-gain Be -  
could-n't sleep and would-n't sleep when love came and told me I should-n't sleep Be -

D E<sub>7</sub> A<sub>7</sub> E<sup>-</sup> A<sub>7</sub> G $\Delta$  F<sup>♯</sup> B<sub>7</sub>



-witched, bo-thered and be - wild-ered am I? I I  
-witched, bo-thered and be - wild-ered am

E<sub>m</sub> B<sub>m</sub> E<sup>-</sup> A<sub>7</sub>



Lost my heart, but what of it? He is cold I a - gree. He can laugh but I

A<sub>7</sub> F<sup>♯</sup> B<sub>7</sub><sup>♯9</sup> E<sup>-</sup> A<sub>7</sub> D D<sup>♯</sup> E<sup>-</sup> A<sub>7</sub>



love it al-though the laugh's on me I'll sing to him, each spring to him, and

D D<sup>7♯5</sup> G $\Delta$  A<sub>7</sub><sup>♭9</sup> D E<sub>7</sub> E<sup>-</sup> A<sub>7</sub> D G $\Delta$  D



long for the day when I'll cling to him Be-witched, bo-thered and be - wild-ered am I.